

The Acquirers Fund (ZIG)
(the “Fund”)

April 16, 2024

**Supplement to the Summary Prospectus, Prospectus,
and Statement of Additional Information, each dated August 31, 2023**

Effective May 1, 2024, the management fee for the Fund has been reduced to an annual rate of 0.79% of the Fund’s average daily net assets. All references to the Fund’s management fee in the Fund’s Summary Prospectus, Prospectus, and Statement of Additional Information are revised to reflect the reduced amount.

The following information replaces the sections of the Summary Prospectus and Prospectus entitled “Fees and Expenses of the Fund” and “Expense Example”:

Fees and Expenses of the Fund

The following table describes the fees and expenses you may pay if you buy, hold, and sell shares of the Fund (“Shares”). **You may pay other fees, such as brokerage commissions and other fees to financial intermediaries, which are not reflected in the table and Example below.**

Annual Fund Operating Expenses <i>(expenses that you pay each year as a percentage of the value of your investment)</i>	
Management Fees ¹	0.79%
Distribution and/or Service (12b-1) Fees	None
Other Expenses	0.00%
Total Annual Fund Operating Expenses	0.79%

¹ Restated to reflect current fees and expenses.

Expense Example

This Example is intended to help you compare the cost of investing in the Fund with the cost of investing in other funds. The Example assumes that you invest \$10,000 in the Fund for the time periods indicated and then continue to hold or redeem all of your Shares at the end of those periods. The Example also assumes that your investment has a 5% return each year and that the Fund’s operating expenses remain the same. Although your actual costs may be higher or lower, based on these assumptions your costs would be:

1 Year	3 Years	5 Years	10 Years
\$81	\$252	\$439	\$978

**Please retain this Supplement with your Summary Prospectus, Prospectus,
and Statement of Additional Information for future reference.**

Listed on NYSE Arca, Inc.

www.acquirersfund.com

Before you invest, you may want to review the Fund's Prospectus and Statement of Additional Information ("SAI"), which contain more information about the Fund and its risks. The current Prospectus and SAI, each dated August 31, 2023, as supplemented from time to time, are incorporated by reference into this Summary Prospectus. You can find the Fund's Prospectus, reports to shareholders, and other information about the Fund online at www.acquirersfund.com. You can also get this information at no cost by calling 1-800-617-0004 or by sending an e-mail request to ETF@usbank.com.

Investment Objective

The Acquirers Fund (the "Fund") seeks capital appreciation.

Fees and Expenses of the Fund

The following table describes the fees and expenses you may pay if you buy, hold, and sell shares of the Fund ("Shares"). **You may pay other fees, such as brokerage commissions and other fees to financial intermediaries, which are not reflected in the table and Example below.**

ANNUAL FUND OPERATING EXPENSES

(expenses that you pay each year as a percentage of the value of your investment)

Management Fees ¹	0.84%
Distribution and/or Service (12b-1) Fees	None
Other Expenses	0.00%
Total Annual Fund Operating Expenses ¹	0.84%

¹ Restated to reflect current fees and expenses.

Expense Example

This Example is intended to help you compare the cost of investing in the Fund with the cost of investing in other funds. The Example assumes that you invest \$10,000 in the Fund for the time periods indicated and then continue to hold or redeem all of your Shares at the end of those periods. The Example also assumes that your investment has a 5% return each year and that the Fund's operating expenses remain the same. Although your actual costs may be higher or lower, based on these assumptions your costs would be:

1 Year: \$86 **3 Years:** \$268 **5 Years:** \$466 **10 Years:** \$1,037

Portfolio Turnover

The Fund pays transaction costs, such as commissions, when it buys and sells securities (or "turns over" its portfolio). A higher portfolio turnover rate may indicate higher transaction costs and may result in higher taxes when Shares are held in a taxable account. These costs, which are not reflected in annual fund operating expenses or in the Example, affect the Fund's performance. During the most recent fiscal year, the Fund's portfolio turnover rate was 105% of the average value of its portfolio.

Principal Investment Strategy

The Fund is an actively managed exchange-traded fund ("ETF") and seeks to achieve its investment objective by investing in equity securities of U.S.-listed companies that Acquirers Funds, LLC, the Fund's investment adviser ("Acquirers" or the "Adviser"), believes to be undervalued, but fundamentally strong. The Adviser typically selects approximately 30 stocks from the largest 25% of all stocks (equivalent to a market capitalization greater than approximately \$2 billion).

The Adviser identifies potentially undervalued stocks by using The Acquirer's Multiple®, which is a valuation metric developed and published in 2014 by Tobias Carlisle, Managing Member of Acquirers. The initial universe of stocks is then valued holistically—assets, earnings, and cash flows are examined—to understand the economic reality of each stock. Each stock is then ranked on the basis of such valuation.

Potential holdings are further evaluated using statistical measures of fraud, earnings manipulation, and financial distress. Each potential holding is then examined for a margin of safety in three ways: (a) a wide discount to a conservative valuation, (b) a strong, liquid balance sheet, and (c) a robust business capable of generating free cash flows. Finally, a forensic-accounting due diligence review of each of the remaining potential components' financial statements, particularly the notes and management's discussion and analysis, is undertaken by the Adviser.

The Fund may invest in companies in any economic sector and may frequently and actively purchase and sell securities. As of July 31, 2023, the Fund had significant exposure to companies in the energy sector.

Principal Investment Risks

The principal risks of investing in the Fund are summarized below. The principal risks are presented in alphabetical order to facilitate finding particular risks and comparing them with other funds. Each risk summarized below is considered a “principal risk” of investing in the Fund, regardless of the order in which it appears. As with any investment, there is a risk that you could lose all or a portion of your investment in the Fund. Some or all of these risks may adversely affect the Fund’s net asset value per share (“NAV”), trading price, yield, total return and/or ability to meet its objectives. For more information about the risks of investing in the Fund, see the section in the Fund’s Prospectus titled “Additional Information About the Fund.”

- **Equity Market Risk.** The equity securities held in the Fund’s portfolio may experience sudden, unpredictable drops in value or long periods of decline in value. This may occur because of factors that affect securities markets generally or factors affecting specific issuers, industries, or sectors in which the Fund invests. Common stocks are generally exposed to greater risk than other types of securities, such as preferred stock and debt obligations, because common stockholders generally have inferior rights to receive payment from issuers. In addition, local, regional or global events such as war, including Russia’s invasion of Ukraine, acts of terrorism, spread of infectious diseases or other public health issues (such as the global pandemic caused by the COVID-19 virus), recessions, rising inflation, or other events could have a significant negative impact on the Fund and its investments. Such events may affect certain geographic regions, countries, sectors and industries more significantly than others. Such events could adversely affect the prices and liquidity of the Fund’s portfolio securities or other instruments and could result in disruptions in the trading markets.
- **ETF Risks.** The Fund is an ETF, and, as a result of an ETF’s structure, it is exposed to the following risks:
 - *Authorized Participants, Market Makers, and Liquidity Providers Concentration Risk.* The Fund has a limited number of financial institutions that may act as Authorized Participants (“APs”). In addition, there may be a limited number of market makers and/or liquidity providers in the marketplace. To the extent either of the following events occur, Shares may trade at a material discount to NAV and possibly face delisting: (i) APs exit the business or otherwise become unable to process creation and/or redemption orders and no other APs step forward to perform these services, or (ii) market makers and/or liquidity providers exit the business or significantly reduce their business activities and no other entities step forward to perform their functions.
 - *Costs of Buying or Selling Shares.* Due to the costs of buying or selling Shares, including brokerage commissions imposed by brokers and bid-ask spreads, frequent trading of Shares may significantly reduce investment results and an investment in Shares may not be advisable for investors who anticipate regularly making small investments.
 - *Shares May Trade at Prices Other Than NAV.* As with all ETFs, Shares may be bought and sold in the secondary market at market prices. Although it is expected that the market price of Shares will approximate the Fund’s NAV, there may be times when the market price of Shares is more than the NAV intra-day (premium) or less than the NAV intra-day (discount) due to supply and demand of Shares or during periods of market volatility. This risk is heightened in times of market volatility, periods of steep market declines, and periods when there is limited trading activity for Shares in the secondary market, in which case such premiums or discounts may be significant.
 - *Trading.* Although Shares are listed for trading on NYSE Arca, Inc. (the “Exchange”) and may be traded on U.S. exchanges other than the Exchange, there can be no assurance that Shares will trade with any volume, or at all, on any stock exchange. In stressed market conditions, the liquidity of Shares may begin to mirror the liquidity of the Fund’s underlying portfolio holdings, which can be significantly less liquid than Shares, and this could lead to differences between the market price of the Shares and the underlying value of those Shares.
- **High Portfolio Turnover Risk.** The Fund is actively managed and may frequently buy and sell portfolio securities and other assets as part of its investment strategy. Higher portfolio turnover may result in the Fund paying higher levels of transaction costs and generating greater tax liabilities for shareholders. Portfolio turnover risk may cause the Fund’s performance to be less than you expect.
- **Management Risk.** The Fund is actively managed and may not meet its investment objective based on the Adviser’s success or failure to implement investment strategies for the Fund.
- **Market Capitalization Risk.**
 - *Large-Capitalization Investing.* The securities of large-capitalization companies may be relatively mature compared to smaller companies and therefore subject to slower growth during times of economic expansion. Large-capitalization companies may also be unable to respond quickly to new competitive challenges, such as changes in technology and consumer tastes.

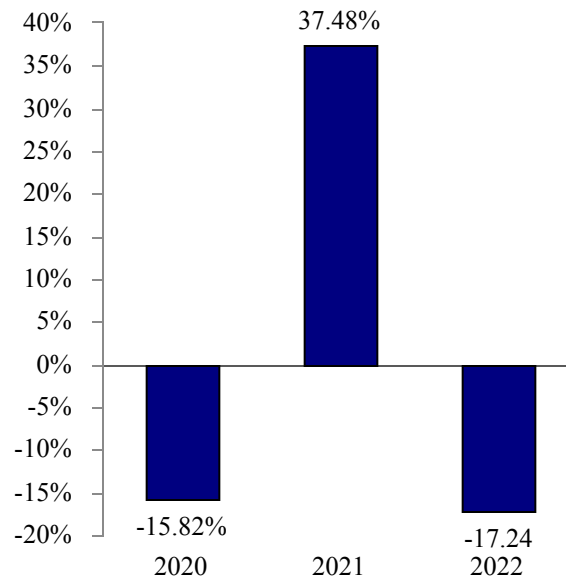
- *Mid-Capitalization Investing.* The securities of mid-capitalization companies may be more vulnerable to adverse issuer, market, political, or economic developments than securities of large-capitalization companies. The securities of mid-capitalization companies generally trade in lower volumes and are subject to greater and more unpredictable price changes than large capitalization stocks or the stock market as a whole.
- **Models and Data Risk.** The Fund relies heavily on proprietary quantitative models as well as information and data supplied by third parties (“Models and Data”). When Models and Data prove to be incorrect or incomplete, any decisions made in reliance thereon may lead to the inclusion or exclusion of securities that would have been excluded or included had the Models and Data been correct and complete. Specifically, the Fund relies on The Acquirer’s Multiple® Model to implement its principal investment strategies. As a result, to the extent such model does not perform as designed or as intended, the Fund’s strategy may not be successfully implemented and the Fund may lose value.
- **Sector Risk.** To the extent the Fund invests more heavily in particular sectors of the economy, its performance will be especially sensitive to developments that significantly affect those sectors.
 - *Energy Sector Risk.* The energy sector is comprised of energy, industrial, infrastructure, and logistics companies, and will therefore be susceptible to adverse economic, environmental, business, regulatory, or other occurrences affecting that sector. The energy sector has experienced substantial price volatility historically and more recently as a result of Russia’s military invasion of Ukraine in February 2022 and the resulting sanctions against Russia and its energy exports by the U.S., European Union, Japan, and other countries. At times, the performance of these investments may lag the performance of other sectors or the market as a whole. Companies operating in the energy sector are subject to specific risks, including, among others, fluctuations in commodity prices; reduced consumer demand for commodities such as oil, natural gas, or petroleum products; reduced availability of natural gas or other commodities for transporting, processing, storing, or delivering; slowdowns in new construction; extreme weather or other natural disasters; and threats of attack by terrorists on energy assets. Additionally, energy sector companies are subject to substantial government regulation and changes in the regulatory environment for energy companies may adversely impact their profitability. Over time, depletion of natural gas reserves and other energy reserves may also affect the profitability of energy companies.

Performance

The following performance information indicates some of the risks of investing in the Fund. The bar chart shows the Fund’s performance for the calendar year ended December 31. The table illustrates how the Fund’s average annual returns for the 1-year and since inception periods compared with those of a broad measure of market performance. The Fund’s past performance, before and after taxes, does not necessarily indicate how it will perform in the future. Updated performance information is also available on the Fund’s website at www.acquirersfund.com.

Prior to December 7, 2021, the Fund operated as an index-based ETF that sought to track the performance of the Acquirer’s Index. Consequently, performance for periods prior to December 7, 2021 does not reflect the Fund’s current investment strategy as an actively-managed ETF. The Fund’s performance may have differed if the Fund’s current strategy had been in place.

Calendar Year Total Return



For the year-to-date period ended June 30, 2023, the Fund's total return was 17.03%. During the period of time shown in the bar chart, the Fund's highest quarterly return was 16.14% for the quarter ended December 31, 2022, and the lowest quarterly return was -27.65% for the quarter ended March 31, 2020.

Average Annual Total Returns For Periods Ended December 31, 2022

The Acquirers Fund	<u>1 Year</u>	<u>Since Inception 5/14/2019</u>
Return Before Taxes	-17.24%	1.27%
Return After Taxes on Distributions	-17.49%	1.16%
Return After Taxes on Distributions and Sale of Shares	-10.03%	0.97%
S&P 500 Total Return Index (reflects no deduction for fees, expenses, or taxes)	-18.11%	10.57%

After-tax returns are calculated using the historical highest individual federal marginal income tax rates during the period covered by the table above and do not reflect the impact of state and local taxes. Actual after-tax returns depend on an investor's tax situation and may differ from those shown. After-tax returns shown are not relevant to investors who hold their Shares through tax-deferred arrangements such as an individual retirement account ("IRA") or other tax-advantaged accounts. In certain cases, the figure representing "Return After Taxes on Distributions and Sale of Shares" may be higher than the other return figures for the same period. A higher after-tax return results when a capital loss occurs upon redemption and provides an assumed tax deduction that benefits the investor.

Management

Investment Adviser	Acquirers Funds, LLC
Sub-Adviser	Toroso Investments, LLC d/b/a Tidal Financial Group ("Toroso" or the "Sub-Adviser")
Portfolio Managers	Charles A. Ragauss, CFA, Portfolio Manager and Head of Trading for Toroso, and Qiao Duan, CFA, Portfolio Manager for Toroso, are responsible for the day-to-day management of the Fund. Mr. Ragauss has been a portfolio manager of the Fund since the Fund's inception in May 2019, and Ms. Duan has been a portfolio manager of the Fund from its inception in May 2019 until October 2020 and again since May 2021.

Purchase and Sale of Shares

Shares are listed on the Exchange, and individual Shares may only be bought and sold in the secondary market through brokers at market prices, rather than NAV. Because Shares trade at market prices rather than NAV, Shares may trade at a price greater than NAV (premium) or less than NAV (discount).

The Fund issues and redeems Shares at NAV only in large blocks known as “Creation Units,” which only APs (typically, broker-dealers) may purchase or redeem. The Fund generally issues and redeems Creation Units in exchange for a portfolio of securities and/or a designated amount of U.S. cash.

Investors may incur costs attributable to the difference between the highest price a buyer is willing to pay to purchase Shares (bid) and the lowest price a seller is willing to accept for Shares (ask) when buying or selling Shares in the secondary market (the “bid-ask spread”). Recent information about the Fund, including its NAV, market price, premiums and discounts, and bid-ask spreads is available on the Fund’s website at www.acquirersfund.com.

Tax Information

Fund distributions are generally taxable as ordinary income, qualified dividend income, or capital gains (or a combination), unless your investment is in an individual retirement account (“IRA”) or other tax-advantaged account. Distributions on investments made through tax-deferred arrangements may be taxed later upon withdrawal of assets from those accounts.

Financial Intermediary Compensation

If you purchase Shares through a broker-dealer or other financial intermediary (such as a bank) (an “Intermediary”), the Adviser or its affiliates may pay Intermediaries for certain activities related to the Fund, including participation in activities that are designed to make Intermediaries more knowledgeable about exchange traded products, including the Fund, or for other activities, such as marketing, educational training or other initiatives related to the sale or promotion of Shares. These payments may create a conflict of interest by influencing the Intermediary and your salesperson to recommend the Fund over another investment. Any such arrangements do not result in increased Fund expenses. Ask your salesperson or visit the Intermediary’s website for more information.